

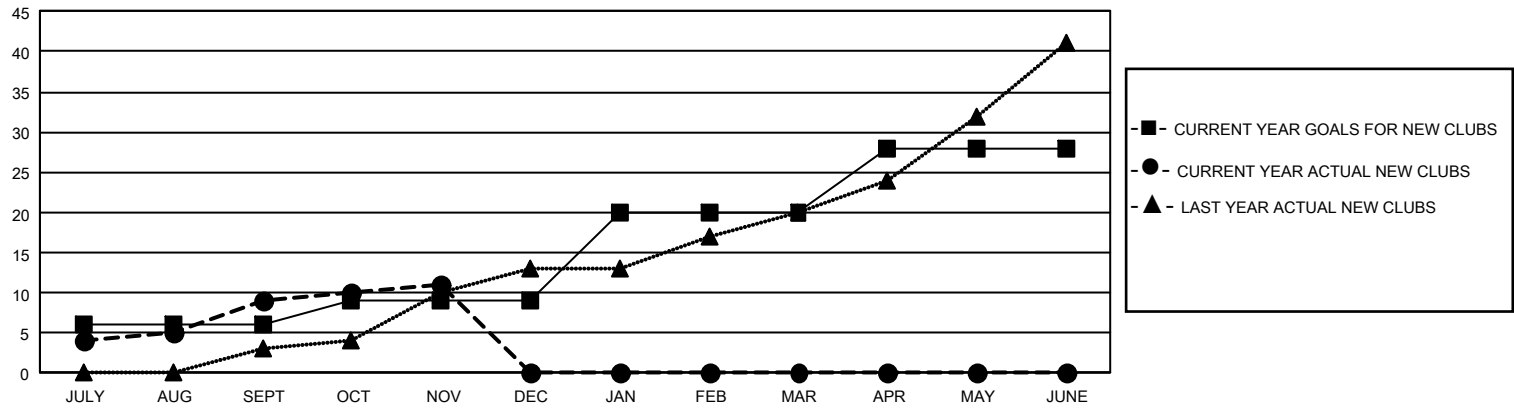


GMT Constitutional Area 3, Group D

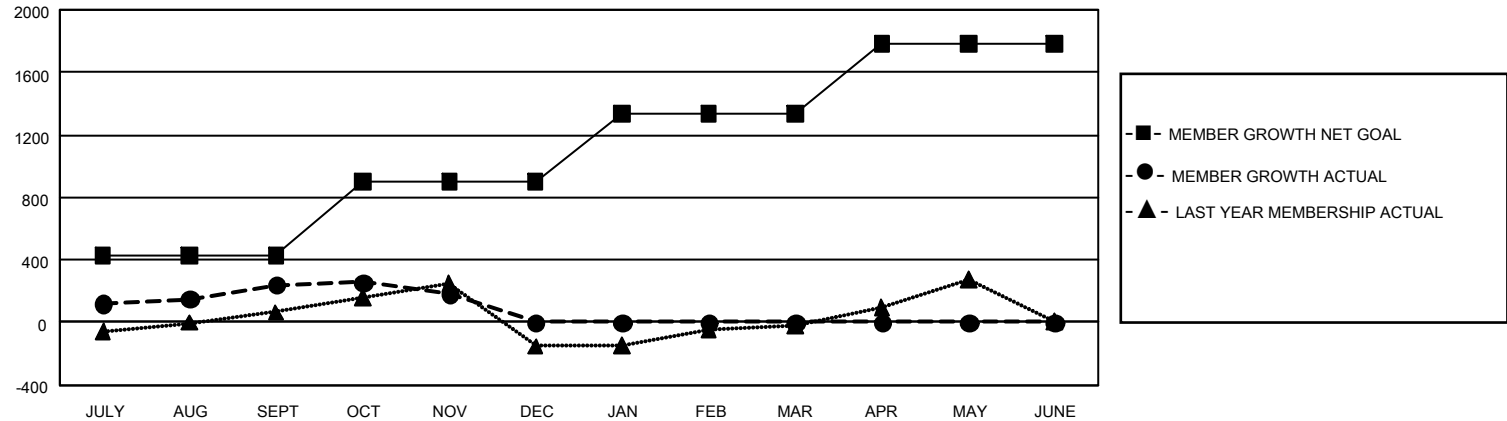
REPORT DOES NOT INCLUDE CLUBS IN UNDISTRICTED AREAS.

Clubs				Members			
RESULTS FOR 2025-2026				RESULTS FOR 2025-2026			
QUARTER	NEW CLUB GOAL	NEW CLUBS	DROPPED CLUBS	QUARTER	MEMBER GROWTH NET GOAL	MEMBER GROWTH ACTUAL	DROPPED MEMBERS ACTUAL (including transfers)
JULY/AUG/SEPT	18	9	5	JULY/AUG/SEPT	429	791	442
OCT/NOV/DEC	9	2	0	OCT/NOV/DEC	469	289	307
JAN/FEB/MAR	33	0	0	JAN/FEB/MAR	437	0	0
APR/MAY/JUNE	24	0	0	APR/MAY/JUNE	445	0	0

GOALS AND ACTUAL NEW CLUBS CUMULATIVE



GOALS AND ACTUAL MEMBERS CUMULATIVE



DROPPED CLUBS: 5		267 CLUBS OF 795 ADDED 1 OR MORE NEW MEMBERS	<u>GENDER DISTRIBUTION</u>	
<u>DROPPED MEMBERS</u> DECEASED 56 CLUB CANCELLED 26 OTHER 659 <hr/> TOTAL 741			MALE	7,118 (45.18%)
			FEMALE	8,636 (54.81%)
			NON BINARY	0 (0.00%)
			PREFER NOT TO ANSWER	1 (0.01%)
		CLICK HERE FOR CUMULATIVE MEMBERSHIP DATA	TOTAL FAMILY UNIT MEMBERS	4,767
			FAMILY MEMBERS PAYING HALF DUES	2,676